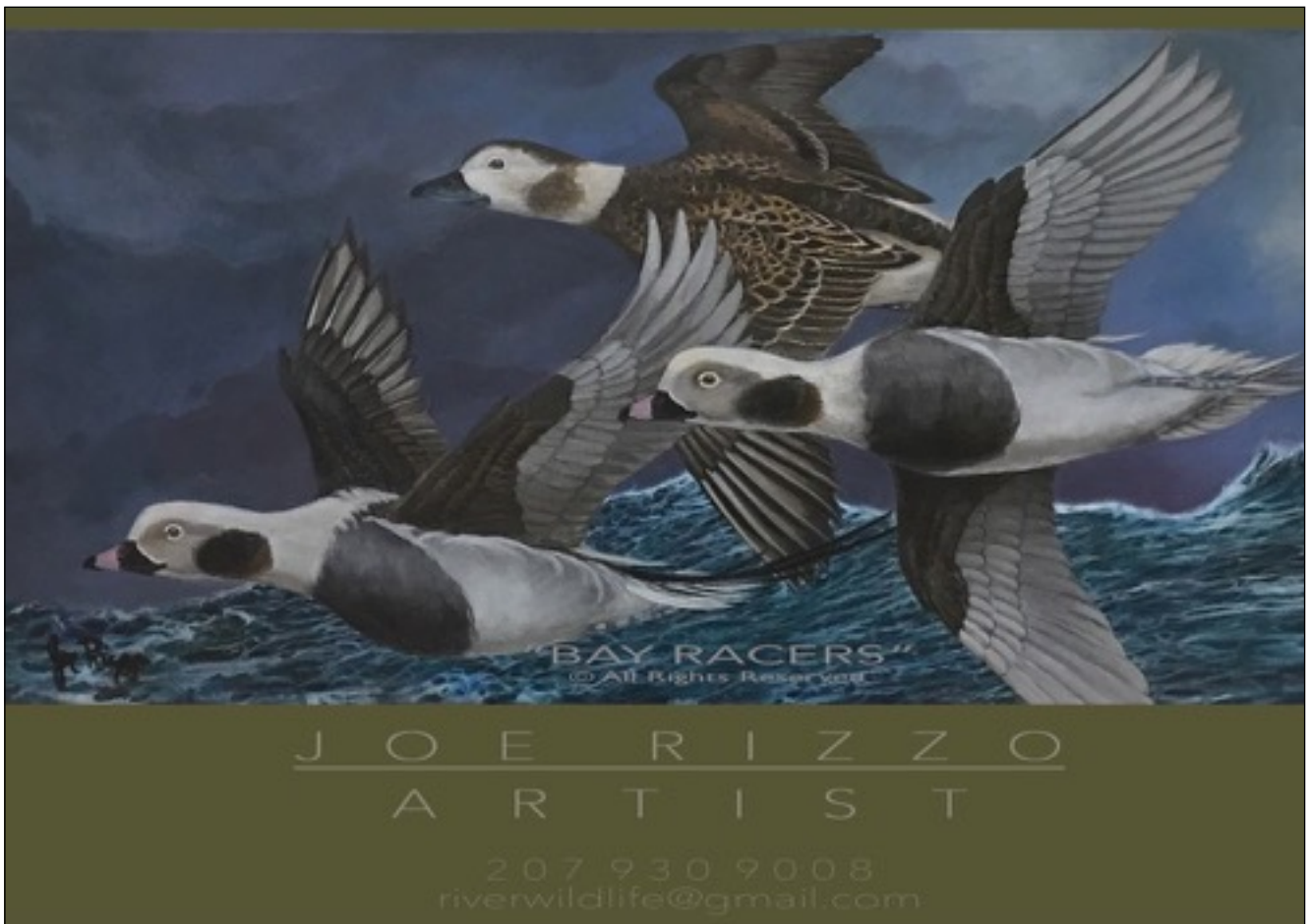




Artist, Carver & Sculptor

Joe Rizzo

"Originality is every thing, with out it, an artist has already failed" Joe



Hello,

I am Joe Rizzo of Brooksville, Maine. As a conservationist, I feel the need to share the beauty of the natural world by bringing an awareness of wildlife thru its presentation in art.

Introduction

I work in many mediums carving, sculpting and painting to present my interest in nature to include birds, ducks, dragonflies and more. This diversity allows me to have options to present the subjects in the way as I see fit for the project at hand. These disciplines include bronze sculptures, natural hard woods, burls, composites and canvas. I like to work in interpretive-sculpture for many of my natural finish woodcarvings bronze sculptures and decoys.



(Photos Above)
Black Walnut Life Size Eagle "Falling Pride"
CherryBurl "Woodcock and Turkey-Tail Mushrooms"
Maple Burl "Batchelor Party" Teal Ducks.





(Photos Above)

"Little Rascals" Ducklings in bronze.

"Espial" Life size otter
available in composite and Bronze

"Woodcock" Adult with burl base bronze.

(Photos Below)

Basswood Loon. Cork woodcock decoy. Cork Green Wing Teal decoy with custom keel



Composition, continuity, color, technique, and use of positive and negative space are all a considerations when I design a project with the subject, mediums and application in mind. This includes, study of a subject, the continuing development of my skills and the attention to details.

I often use impressionistic-abstract, impressionistic, realistic styles of art for canvas applications in both oil and acrylics as they allow me the most artist freedom and creativity. etc. although my originals are found in galleries in Maine, I also offer prints available on Fine Art America.



Here are a few examples of different styles of painting

Abstract custom stretched canvas of butterflies

Realistic Bufflehead Ducks

Impressionistic Woodcock Canvas

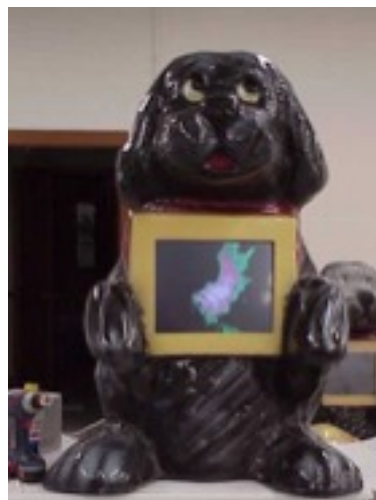


These custom sculptures are created as one of a kind exterior sculptures without the use of molds. Created in durable composite materials. They include Fiberglass and elastomeric compounds finished in automotive base coats or other industrial coatings to include Imron and composite metal.



Over the years, many of my custom projects have become local and national landmarks such as a giant catfish in Alabama, giant lobsters in Maine and New Jersey, the giant frog clock in Bangor Maine etc. Here are a few examples.

I have numerous awards for my wildlife carvings, sculptures and paintings. My work has been featured in many national publications and my art can be found in several galleries and private collections through out the U.S. I have also provided a full production service as a carver, sculptor and fabricator for many movie props and pieces for different types of private projects. My accomplishments have included museum exhibits, amusement rides, signage, sculptures, paintings and more. I produced the master super flume log rides for Six flags amusement parks and Dollywood in Tennessee as well as interactive touch screen sculptures in Wisconsin and movie props in California. Some of my back ground includes being a project manager and engineer for a large OEM manufacturer. This utilized my skills as fabricator, my knowledge in R&D and I held a U/L rating for sign making of both high and low voltage electric signs as well as having three of my own U/L labels created for my interactive touch screen kiosks, a first of its kind.



(Above) Master Plug Dollywood Flume ride in Clay
(Right) Pair of interactive Touch screen U/L approved dog sculpture Kiosks



Signage shown)
NBA headquarters N.Y (Automotive Finish)
American Legion ; (Hand Carved 24 K Gold leaf 15 lb.
High Density foam and automotive finish)
Hand lettering

Sculptural Graphics Exterior and Interior (carved
foam)

Traditional Sign building techniques have enabled me to produce signage in many applications. I was featured in the 100th edition of Sign Craft Magazine for my custom signage. Carved signage and hand lettering are skills I have leaned on for some time. I also produced interior and exterior carved graphics as shown below.



I enjoy custom fabrication and I have produced many custom props and other projects that require difficult building techniques.

Building custom Props for movies, commercials or prop houses is something I enjoy but, they always have some impossible task associated with them. (Photo to the right)

This was a french, wall mount toilet I had made for a Gillette razor commercial. The actor pops his head out of the bowl with a comment. This was a custom built, glass smooth porcelain finish interior and exterior and durable. I had three days to produce and deliver.



(Photo to the right)

I was asked to produce a pair if chairs for a tv show "Minions."

They had to be domed, durable and delivered for filming in 4 days.



Here are a few props requiring unique skill sets.

This man hole cover had to read as believable on camera. Actors are not allowed to move the real covers because that is only allowed by state workers. This cover was created out of PVC and paint for Comedy Central's production of "Broad City".



I was asked to create a placenta, human stool, silicone blood as well as my own "Jo Scenic Blood" (the best consumable blood on film) for the Comedy Central production of "Odd Mom Out". This placenta was one of two I produced. They were flexible, looked real and had a 8 foot umbilical cord attached. I had one night to produce everything! They Loved it!



This is a photo of the production of three different size heads of the lead character "Virginia" from the Christmas story titled "Yes Virginia, there is a Santa Clause". It was for the Macy's Christmas window display in Manhattan.

I created these heads from foam and clay. They were then cast and reproduced for the mannequin bodies for the story display.



As a commercial artist, my personal experiences include many different projects. My early scenic artist experiences started in 2004 in New York city as I became a member of the USA 829 Film Union of New York until early 2016.

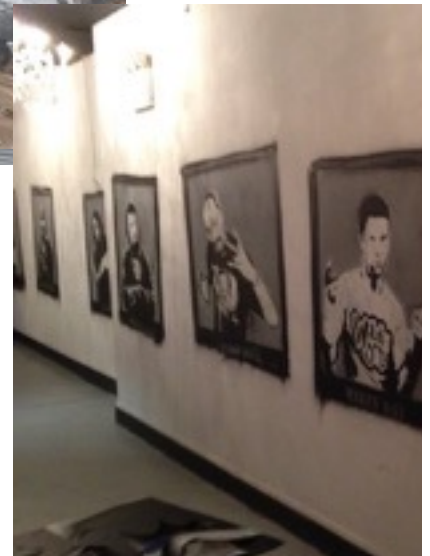
I was involved with films such as **The Good Shepard** a Robert Dinero Matt Damon film. **Spiderman 3**, **The lost Crystal Skull**, **Righteous Kill**, **Tempest**, **Fair Game**, **27 Dresses**, **Revolutionary Road**, **The Unorthodox**, TV and Cable shows **The Bronx is Burning**, **White Collar**, **Ugly Betty**, **For one more day**, and many more. Way to many to list here.

These experiences brought me to lead projects as “Charge Scenic, a Camera Scenic and on a few occasions, an “Art Director” for many productions. My experience in managing big crews with tough schedules and budgets was priceless and helped pave my way to success, as I charged epic movies such as “**Taken 3**” in Georgia. “**And so it goes**”, “**Life of crime**” and 140 episodes of “**Deal or No Deal**” in Connecticut along with TV shows like “**America’s Got Talent**” **Live at Radio City Music Hall**, “**Inside Amy Shumer**”, “**Taxi Brooklyn**”, in New York to name but only a few and not to mention the several Broadway theater productions I’ve worked on.



(Photos) Chair and Swan
produced for
“Americas Got Talent”
Live Broadcast at Radio Music
City

Hall way for “Wild’N”Out”



I was “Charge Scenic for several live shows such as 140 episodes of “Deal or No Deal” “Americas Got Talent”, Neal Patrick Henry’s “Best Show Ever” and Nick Cannons Show “Wild N Out”

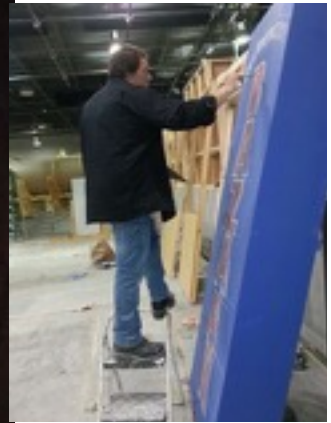
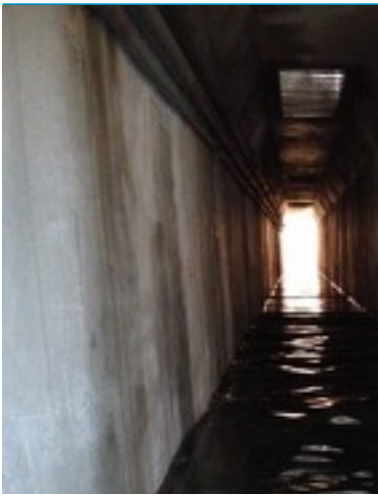


My crew members and I transformed a clean, new taxi into a burned up wreck with out the use of fire or other harmful chemicals in just 4 hours! The Fire Marshal was baffled!

As a Charge Scenic, there is a lot of pressure and responsibility but great rewards. I never missed a mark! I love making movies! Here are a few photos of the magic of film!



(Right) Creating Stone for the movie "God Behaving Badly" (Center) Sculptures for the TV show "White Collar" and (Left) Tombstones for the movie "And So It Goes"



As the Charge Scenic on “Taken 3” filmed in Atlanta Georgia, we produced many creative sets but the waist high water set of a sewer system that ran 10,000 gallons of running water is why I asked asked to be the charge. Creating fake brick, stone, cement, signs jail cells, movie and commercial sets etc. was all a great experience.

In addition to the commercial applications of my career, my skills have taken me across the country. Though the travel and living in NY and CT was exciting, upon the arrival of grandchildren and other dynamics, my family requested me to be more available, so in 2016 I decided to relocate back to Maine as I had an empty home and shop and at that time I decided to extend my professional experiences and service locally.

The following pages are a few examples of my most current work.



Patriot Truck
Custom Painted

Harley Roadsters
Custom Painted



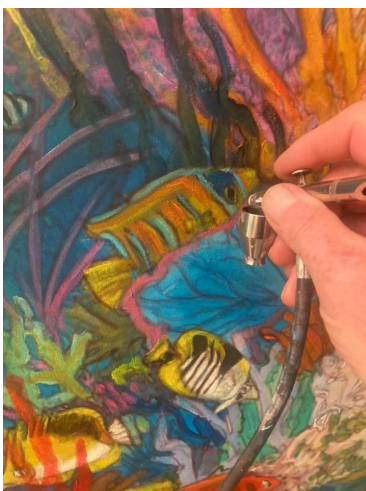
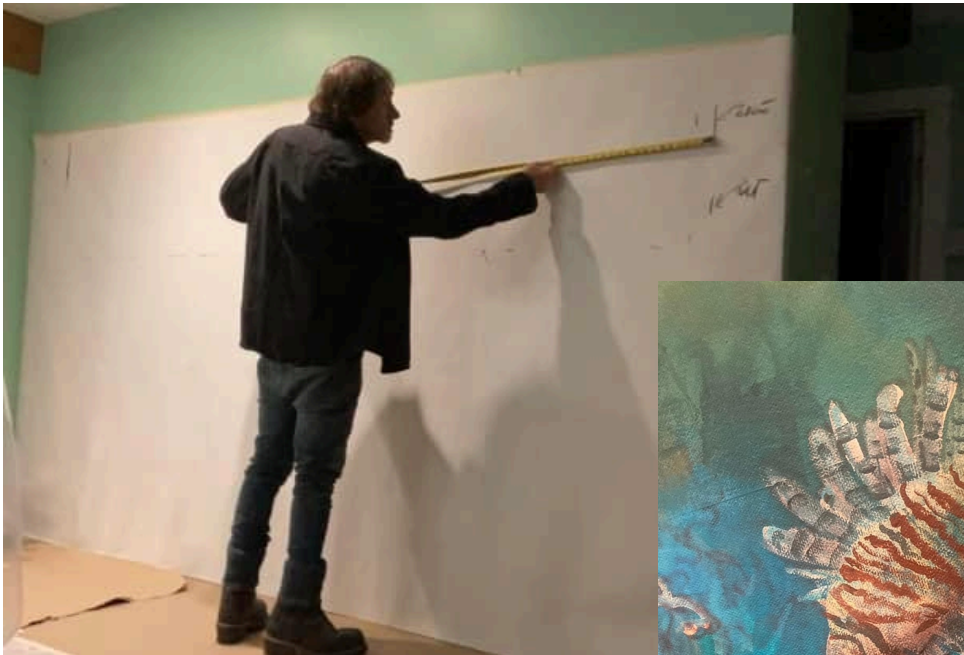
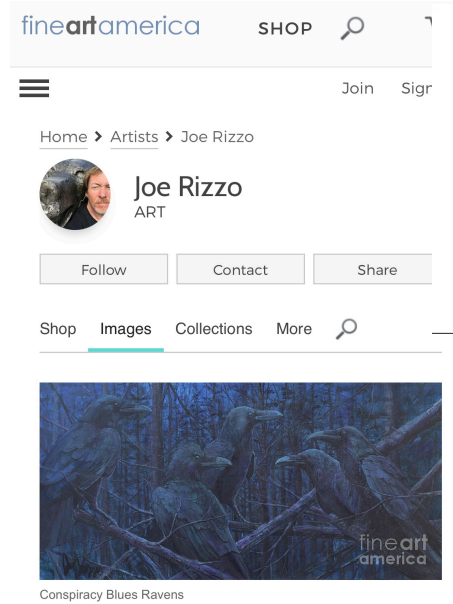
Custom Painted Dodge Charger



Custom Heirloom Hand Forged Gold & Silver Pendant Jewelry



Fine Art Originals And Prints



Sculptures & Monuments





My diversity of skills and art work well applied in the sign industry with creativity in exhibits and monuments. This change also allowed me to be creative in the pursuit of my own art and other passions and continues still.

I hope you find my work of interest to enriching your life!

Cheers!

Thanks for taking the time to look!

Best!

Joe



Much More
To Come!!

